

## Seacrest - Bryon

\$822,610



ARTIST'S IMPRESSION

Lot 10, 17, 19, 21

198.5 sqm



### Home Inclusions

- Upgraded facade
- All council certifying fees
- Bushfire allowance
- Automatic garage door
- Driveway Allowance
- Floor coverings throughout
- Free standing bath
- Gas Hot Water System
- LED downlights
- 900mm Appliances
- 2.5m Ceilings
- Dishwasher
- Niches to showers
- Wide front door
- Timberline wall hung vanities
- Stone benchtop to kitchen
- Clothesline

Disclaimer: Package based on standard site costs, please see our New Home Consultant for details. Photographs & illustrations are intended to be a visual aid only. Pycon Homes & Constructions gives no warranty and makes no representation to the accuracy or sufficiency of any description, illustration, photograph or statement contained in this brochure and accepts no liability for any loss suffered by any person who relies on either wholly or partly upon the information presented. All information is subject to change without notice. This package cannot be used conjunction with any other offer or promotion. Based on land value of \$435,000. Land purchase is completed direct with the land developer. Facade image displayed is for illustration purposes only and design covenants must be adhered to. Please consult your builder to select the appropriate facade for your build.

## Bayside - A

\$873,360

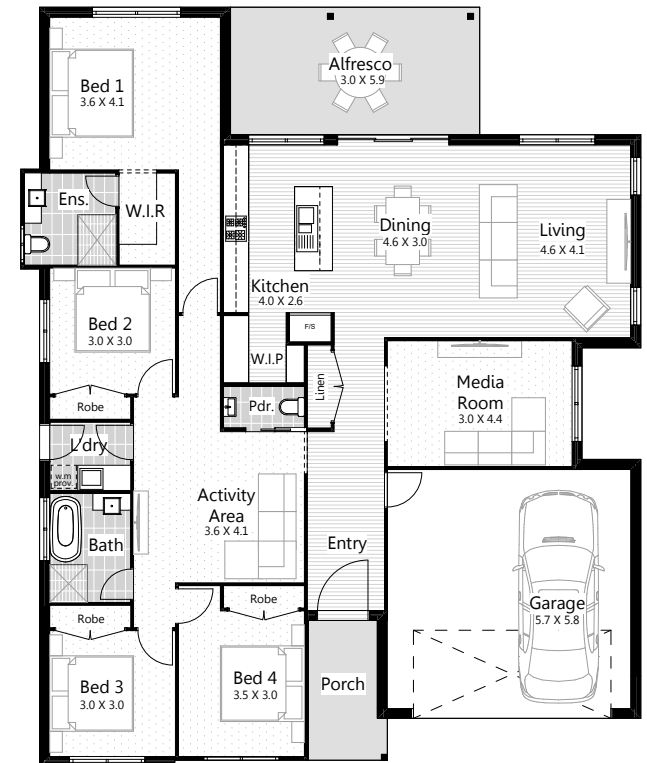


Lot 10, 17, 19, 21

237.3 sqm



## Ground Floor



### Home Inclusions

- Upgraded facade
- All council certifying fees
- Bushfire allowance
- Automatic garage door
- Driveway Allowance
- Floor coverings throughout
- Free standing bath
- Gas Hot Water System
- LED downlights
- 900mm Appliances
- 2.5m Ceilings
- Dishwasher
- Niches to showers
- Wide front door
- Timberline wall hung vanities
- Stone benchtop to kitchen
- Clothesline



Disclaimer: Package based on standard site costs, please see our New Home Consultant for details. Photographs & illustrations are intended to be a visual aid only. Pycon Homes & Constructions gives no warranty and makes no representation to the accuracy or sufficiency of any description, illustration, photograph or statement contained in this brochure and accepts no liability for any loss suffered by any person who relies on either wholly or partly upon the information presented. All information is subject to change without notice. This package cannot be used conjunction with any other offer or promotion. Based on land value of \$435,000. Land purchase is completed direct with the land developer. Facade image displayed is for illustration purposes only and design covenants must be adhered to. Please consult your builder to select the appropriate facade for your build.

## The Clontarf

\$967,150



ARTIST'S IMPRESSION

Lot 15, 16, 18, 31

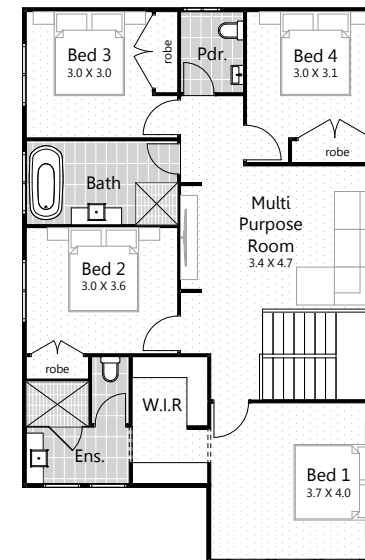
267.1 sqm



### Ground Floor



### First Floor



### Home Inclusions

- Upgraded facade
- All council certifying fees
- Bushfire allowance
- Automatic garage door
- Driveway Allowance
- Floor coverings throughout
- Free standing bath
- Gas Hot Water System
- LED downlights
- 900mm Appliances
- 2.5m Ceilings
- Dishwasher
- Niches to showers
- Wide front door
- Timberline wall hung vanities
- Stone benchtop to kitchen
- Clothesline

Disclaimer: Package based on standard site costs, please see our New Home Consultant for details. Photographs & illustrations are intended to be a visual aid only. Pycon Homes & Constructions gives no warranty and makes no representation to the accuracy or sufficiency of any description, illustration, photograph or statement contained in this brochure and accepts no liability for any loss suffered by any person who relies on either wholly or partly upon the information presented. All information is subject to change without notice. This package cannot be used conjunction with any other offer or promotion. Based on land value of \$435,000. Land purchase is completed direct with the land developer. Facade image displayed is for illustration purposes only and design covenants must be adhered to. Please consult your builder to select the appropriate facade for your build.